

INTEGRATED TRIBAL DEVELOPMENT AGENCY, PARALKHEMUNDI

Among tribals, the Saora (Saura) community constitutes numerically the largest group in this ITDA area and Lanjia Saora is considered most primitive in this area.

ASPECTS OF SAORA CULTURE

ETHNO HISTORY:-

The saoras are one of the oldest known tribes of India. They are called by various terms such as Savaras, Sabaras, Saura, Saora etc. But here the term, Saora is used uniformly as it closely approximates their language. They are widely distributed from Bundelkhand in the west to Orissa in the east. But, they are found in great compactness on the edges of the Eastern ghats in Ganjam, Gajapati and undivided Koraput districts of Orissa and Srikakulam district of Andhra Pradesh. The saoras show their racial affinity to the proto Australoid physical characters which are dominant among the aborigines of central and Southern India.

Their language is akin to the Kolarian stock which has close resemblance to the forms of speech of wild tribes of Malayan peninsula and Nicobar. Their linguistic affinity with tribes of south east suggests their migration from the islands of India Archipelago and Malayan peninsula, unless contrary is proved that India was the cradle land of the Kolana speaking tribes and south eastern countries were colonized by them.

The term 'Saora' appears to have two connotations – one derived from 'Sagoriss', the Scythian word for axe and the other from 'Saba roye', the Sanskrit term for carrying a dead body. Both of them fit well with their habits of carrying on axe always on their shoulders with their primitive occupation of hunting.

The epics and puranas refer to their devotion to the Hindu religious heroes like Rama and the Jaganath cult. The legend of Viswabasu, a Saora king who worshiped the image of Vishnu in the term of Lord Jaganath indicates the impact of Vaishnavism on the Saoras.

It is well known that, like other tribal communities, the Saoras are the indigenous, autochthons of India in the sense that they had been long settled in different parts of the country particularly on the plains and river valleys and other fertile areas. Many of the Saoras were in a food gathering economy and a few were perhaps on the threshold of a real food producing economy. On the whole, they were in all respects primitive, wild and under developed.

ECOLOGICAL SETTINGS AND RESIDENTIAL PATTERN:-

The hill Saoras build their small huts at the foot of the hills or on the hill slopes, where suitable plain land is available in the proximity of a hill stream.

A typical Saora house is rectangular in ground plan having mainly three portions – the open front verandah, the closed back porch and in between the bedroom-cum-kitchen. The fowl pen is provided either in one of the corners of bedroom or in the back verandah and the pigsty is in the front of the house attached to the front verandah.

The mud walled and grass thatched huts give a feeling of warmth and comfort. It is dark inside because no window is provided in the house. For the Saoras who spend most of their time outside in the field, ventilation is not important as the darkness is not because of privacy but because of the need for keeping the inside of the house out of sight of Ghosts and spirits and safeguarding against the evil eye.

VILLAGE: -

Saora village broadly conform to a linear pattern. Each village consists of two rows of houses facing each other and separated by a long and narrow village street road. The individual houses in each row are built adjacent to one another thus forming the front verandah of all houses – continuous one from one end of the row to other.

Among the hill Saoras, the villages are situated in the most inaccessible areas that can be imagined and in most cases lie hidden in the thick forests making it most difficult to reach them except through Zig-Zag foot paths. Their settlements are not shifting. There is nothing nomadic nature in their settlement pattern. The size of the Saora village is mainly governed by the extent of hill slopes and forest land available for shifting cultivation.

ECONOMIC ORGANISATION: -

The Saoras can be divided broadly into two economic classes. (1) The Saoras of the plains depending on either wet cultivation or wage earning and selling fire wood and (2) The hill Saoras practicing shifting cultivation and terraced cultivation on the hill slopes. In most cases the Saoras of the plains are subservient to the advanced section of the neighbouring non-tribal communities. They provide labour to the non-tribal land owners at the time of weeding, transplanting, harvesting and other agricultural operations and sell fire wood and leaf plates in the local markets. In all these works women rather than men take active part and earn the major part of the family income.

RELIGIOUS BELIEFS AND PRACTICES: -

The Saoras live in a world of spirits and their culture is marked with elaborate ceremonialism and ritualism. The spirits control the course of nature and human life and the need to keep them under control has given rise to numerous religious practices, magical spells and incantations, sorcery and witch crafts. Religious specialists, magicians, sorcers and shamans are there in the saora society to cater to their religious and magical needs.

ARTS, CRAFTS AND DANCE: -

A number of sketches are seen both outside and inside (which is absolutely dark the house of a Saora. These drawings are symbolic and rarely, if at all, have anthropomorphic form. Family deity (Idai soom), Sun (Eoog soom) and Moon (Angei soom) are commonly represented in these symbols. After marriage, the bride and groom sit under these ikons. Agricultural produces after first harvest of the season are also placed before these deities as offerings. The drawing of designs on walls as representatives of

deities and their worship is common throughout Orissa including in Laxmipuja and undoubtedly is of pre-historic origin. The Saoras keep a record of the departing souls by placing a long sharply outlined stone at a community place near the village on 1st death anniversary. The anniversary may not fall as per calendar. On the same day the village may have a common anniversary. Big stones are used in memory of adult (Souls) and Small stones for children. The place and the custom is known as 'Guara'.

The Saoras dance during the ceremonies and marriages. Men, women and children crowd over each other and dance. The dance consists of rhythmic forward and backward rockings tuned to musical beats. Musical instruments are invariably played by men. Sometimes the musician may make the dancers travel up and down a slope. The men carry sticks, arrows and bow, swords, etc. and blow whistles and make peculiar sound. The religious dances are rarely accompanied by songs except during marriage ceremony. Of course, songs go a begging during leisure hours, during work or from work.

All this has generated the necessity of musical instruments. The tribal economy, fairly self context, had to make its own instruments. Some of the instruments, the Saoras make are 'Dollun' (Hemispherical drum), 'Tudumn', 'Dagadan' (Kettle drum), 'Kadigan' and 'Jaltarang' made from reeds and played with bare fingers. There are three types of string instruments called 'Gogerajan', 'Mamerajan' 'Kuranrajan' of Lanjia Saoras of serango. One stringed instrument in Mahendragiri area is made as follows:

"Hemispherical copra is sliced off at the narrow end and a thin animal skin is tightly tied up. Two holes are made on the diameter side and a bamboo rod (seasoned with fire) is inserted. Pegs are fixed at both end of the rod and metallic wires are tied. The bow is made from the dried tender of salpa vine, tied to a thin lamina of bamboo. An accompanying beat instrument is made from bamboo as follows:

A hollow green bamboo about 1 foot long, with two joints at both ends intact is taken and a narrow strip along the length of breadth about 3 cms is removed with sharp knife. The bamboo is seasoned with fire, so that it gives a clear resonant distinct beat, when beaten with a solid thin seasoned bamboo stick along the slit. Brass instruments like horn, gong, cymbal, trumpet played by tribals are purchased from outside."

The dress of Saora is simple and supplied by a person of "Damba" caste (who is also his money lender). The dress of lady consists of a waist cloth with grey borders hardly reaching the knee. Only in chilly weather, the upper portion of the body is covered. The man's dress consists of a loin cloth. A few necklaces of glass, clay, Kaincha or Gunja laced with threads or wire plastic or horn beads, wooden or metal ear rings, brass hair pins, brass rings, little rings of alae of nose, metal bangles and anklets constitute the jewellery of saoras.

Archery continues to be important for hunting, fishing, and self protection. The bow string like bow of string instruments is made from tenders of salapa vine. Most of the fishing of saoras is still done with bow and arrow, this in turn depending on keen eyesight and sharp reflexes.

Craftsmanship, as the outsider understands it, is not exactly the field of excellence of saora. But, some traditional designs deserve mention (i) the oil extraction unit which is fitted to a tree and oil is extracted by the sheer weight of man sitting on it. (ii) the distillery of portable type. (iii) containers-cum-

tumblers for drinks from dried gourd for salapa and from bamboo for Mahuli.(iv) A brass tumbler for drinks made with extra finishing. This one, of course, like all other brass items is made by non-tribals.

EVOLUTION OF SUITABLE STRATEGY FOR DEVELOPMENT

The British government followed a policy of Laissez- faire keeping in view the strategy of isolating the tribals from the main stream. At first the tribal areas were administered according to the special laws such as the Ganjam and Vizagpatnam Act,1839.Later all these areas were declared as "Scheduled Districts" and their administration was conducted in accordance with scheduled District Act,1874.In the Government of India Act,1919 these area were removed with different degrees of exclusion such as "wholly excluded Areas" and "Area of Modified Exclusion" which were changed in the Government of India Act,1935 as "Excluded Areas" and "Partially Excluded Areas". The tribal tracts of Orissa were declared as "partially excluded".

The policy of welfare state changed after independence has cast a heavy responsibility on the Government with regard to protection and advancement of scheduled tribes. The first phase of development with a specially evolved strategy was the introduction of multipurpose tribal development blocks in select areas of tribal concentration in the second Five Year Plan. Encouraged by the response from tribals, the tribal development was taken up by carving out of TD blocks during 3rd Five Year Plan which also continued in the 4th Five year Plan period also.

The programmes of development of Tribal Development Blocks were basically the same as that of C.D.Blocks.But, the schematic provision was more than double in TD Blocks vis-à-vis C.D.Blocks.These development efforts through Blocks resulted in diffusion of activities and increased the gulf between tribals and non-tribals which high lighted the need for more concerted and concentrated effort which resulted in launching of TDAs and ITDPs in the areas of more backwardness during 5th Plan period.

A serious effort was made at the commencement of the 5th Plan for an integrated development approach in planning for tribals in Blocks with tribal concentration of 50 percent and more which was named as tribal Sub-Plan. They were constituted into viable ITDPs.

During Medium Term Plan starting from 1978, pockets with minimum population of 10000 having 50 percent tribal tribals living in contiguous areas were taken up for intensive development under "Modified Area Development Approach".Similarly,micro projects were formed in isolated pockets for development of primitive tribes.

The 6th Plan document envisaged a major break-through in the field of tribal development. The strategy for tribal development as evolved during the 5th Plan had two objectives i.e. area development and economic upliftment of individual tribal beneficiaries as against the main thrust on area development till launching of the 5th Plan. These two objectives were further revolutionalised during 6th Plan period in favour of development of critical infrastructure and bringing out 50% of tribal families above poverty line through family oriented Income Generating Schemes and raising the level of productivity in core economic sectors like Agriculture, horticulture and animal husbandry etc.The dispute as to whether a policy of isolation or a policy of assimilation should be followed in matter of tribal development has been shelved for

ever with the 5th and 6th plan objectives to bring these people on par with general population and to induct them into the national main stream in a given time span. As it involve massive investment of human and natural resources , the main thrust of development would come from general sectoral programmes.As it has been decided to bring the tribal population on par with general population in a given time span, the Sub-Plan approach envisages quantification of pooled resources under various sectoral programmes for speedy development of tribal people and tribal areas.

Prior to formation of ITDA, Paralakhemundi in 1979, the TDA, Paralakhemundi was functioning since March 1972 covering 7 blocks of Paralakhemundi Sub-Division (now Gajapati District) and Tumba Agency area of Berhmpur Sub-Division (now in Ganjam District).The TDA was constituted with the assistance from Govt. of India, Ministry of Agriculture to serve as a catalyst for stimulating, fostering and promoting the developmental activities in the project area for the tribals only. The TDA programme was only additive or supplemental in nature and is not intended to replace or substitute the normal flow of funds from the State Government source for execution of various developmental schemes in the project area. The programmes implemented during TDA period were mainly related to agriculture, Irrigation and rural communication programmes.Since TDA was functioning in this area, ITDP/ITDA was not constituted, although ITDPs were formed since 1974-75 in other tribal areas of State.

At the instance of Govt. of India, it has been decided that after 30.06.79, the uniform pattern of ITDP/ITDA should be extended to the entire Sub-Plan area.

In pursuance of the above decision, the ITDP, Paralakhemundi was grounded on 30.06.79 as per resolution no.19149 dt.28.06.79 of erstwhile H&TW Department, Govt. of Orissa. The ITDP, Paralakhemundi was converted into ITDA in pursuance of resolution No.19155 dt. 28.06.79 of Govt. in erstwhile H&TW Department, Orissa.The ITDA, Paralakhemundi was registered as society on 30.08.79 under the Societies Registration Act of 1860 bearing registration No.15998/832 of 1979-80.

1.Location:-

(i) District,Revenue Sub-division and Blocks:

District:	Gajapati
Revenue Sub-division:	Paralakhemundi
Blocks:	Gumma, Rayagada, Nuagada, R.Udayagiri & Mohana

(ii) Bordering administrative units: Rayagada district in west and Kondhamal district in north, Ganjam district in east and Srikakulam district of Andhra Pradesh in south.

(iii) Longitudes and Latitudes: 18° 52' N to 19° 38' N Latitudes
53° 55' E to 84° 25' E Longitudes

(iv) Roads connecting the ITDA head quarters.

1. Berhmpur - Paralakhemundi road via R.Udayagiri
2. Berhmpur- Paralakhemundi road via Ramagiri /Jirango
3. Berhmpur –Paralakhemundi road via Palasa
4. Berhmpur –Paralakhemundi road via Mandasa/Garabandha
5. Gunupur – Paralakhemundi road
6. Serango – Paralakhemundi road
7. Nuagada – Paralakhemundi road via Khajuripada
8. Mohana - Paralakhemundi road via Chandiput

2. Geophysical feature:

(i) Geophysical divisions:

The hilly areas of the ITDA area comprises of 5 development Blocks. The table land of western sector is the continuation of the great line of the Eastern Ghats and is mainly formed by two plateaus conspicuously featured by some of highest mountains of Orissa. The northern western plateaus lies between the mountain ranges of Baliguda in the north and R.Udayagiri in the south, with varying altitudes from 609 m to 13464 m.

(ii) Mountain and Hills (highest peak)

Mahendragiri (1500.53 m)

(iii) Rivers and streams:

Mahendratanaya river
Badanadi in Mohana Block

(iv) Forest, flora and fauna

Out of total forest area of 2351.11 sq.kms in the district, 446.12 sq.kms are reserve forest. The major/minor forest products are timber, bamboo, Hill broom, Patala Goruda, Soap nut, .B.Kaliakhali, Marsinga leaf, Dhatuki flowers, Kochila seeds, Genduli Gum, Siali leaves, Kath alai etc.

The soil and climate is suitable for plantation crops and there is a great potential for horticulture development in the district. More than 60 % of lands are situated in hilly terrain, which has been treated as high lands, which is mainly suitable for horticulture plantation and other cultivable land belongs to the category of medium lands (20 %) and low lands (15%).

(vi) Forest plantation:

Teak, Sal, Gambhari, etc.

(vii) Climate, temperature, rain fall:

The atmospheric temperature varies between 16 degree C to 48 degree C. The normal rain fall received is 1324.86 mm.

(viii) Soil, mines and minerals:

The main soil types are clay loam, sandy loam and red soil. There is no existence of mines. The mountains contain no exploitable mineral of economic value.

3. Places of Historical Importance and Tourist interest:

i) Mahendragiri

Block: Rayagada

Distance from Block hqs.: 75 kms.

Distance from Sub-division hqs.: 65 kms.

Communication and mode of transport:

From Block Hq:

By public transport: 63 kms.

By Jeep : 7kms.

By foot: 5 kms.

From ITDA hqs:

By Public transport: 53kms.

By Jeep : 7 kms.

By foot: 5 kms.

Importance of the place: Historical as well as tourist interest.

Important occasions/activities attracting visitors:

On Mahasivaratri day people from all parts gather here to perform puja to lord Shiva.

ii) Gandahati water fall:

Block: Rayagada

Distance from Block hqs: 25 kms.

Distance from Sub-division hqs.: 23 kms.

Communication and mode of transport: Public transport

Importance of the place: Tourist place

Important occasions /activities attracting visitors:

It is a picnic place. People from all parts of Orissa as well as outside state gather during winter season for the purpose.

iii) Gudguda water fall:

Block: Rayagada

Distance from Block hqs: 51 kms.

Distance from Sub-division hqs.: 41 kms.

Communication and mode of transport: Public transport

Importance of the place: Tourist place

Important occasions /activities attracting visitors:

It is a picnic place. Tourists from all parts of Orissa as well as outside state gather during winter season for the purpose

4. Administrative Set-up:

- i) Blocks: 5
- ii) Total geographical area: 3574.40 sq.kms.
- Forest area:
- iii) No. of GPs: 96
- iv) Distance from block hqs. to ITDA hqs.
- Mohana Block hqs. – 114 kms.
- R.Udayagiri Block Hqs. 63 kms.
- Nuagada Block hqs. 58 kms.
- Rayagada Block hqs: 40 kms.
- Gumma Block hqs: 33 kms.

v) Communication and mode of transport: All Block hqs. have been Connected by pucca road and public transport system

5. POPULATION

Name of Block	No. of GPs	Area in sq.km	No. of villages		Category wise population		
			Inhabitated	uninhabitated	SC	ST	OC
Gumma	19	1055.32	209	11	2674	48603	14073
Mohana	32	655.20	478	22	5089	65311	45470
Nuagada	14	437.12	178	7	292	35631	10677
R.Udayagiri	13	465.25	236	16	1950	37713	15779
Rayagada	18	961.51	216	9	1556	50514	11973
Total	96	3574.40	1317	65	11561	237772	97972

6. Administration and Management:

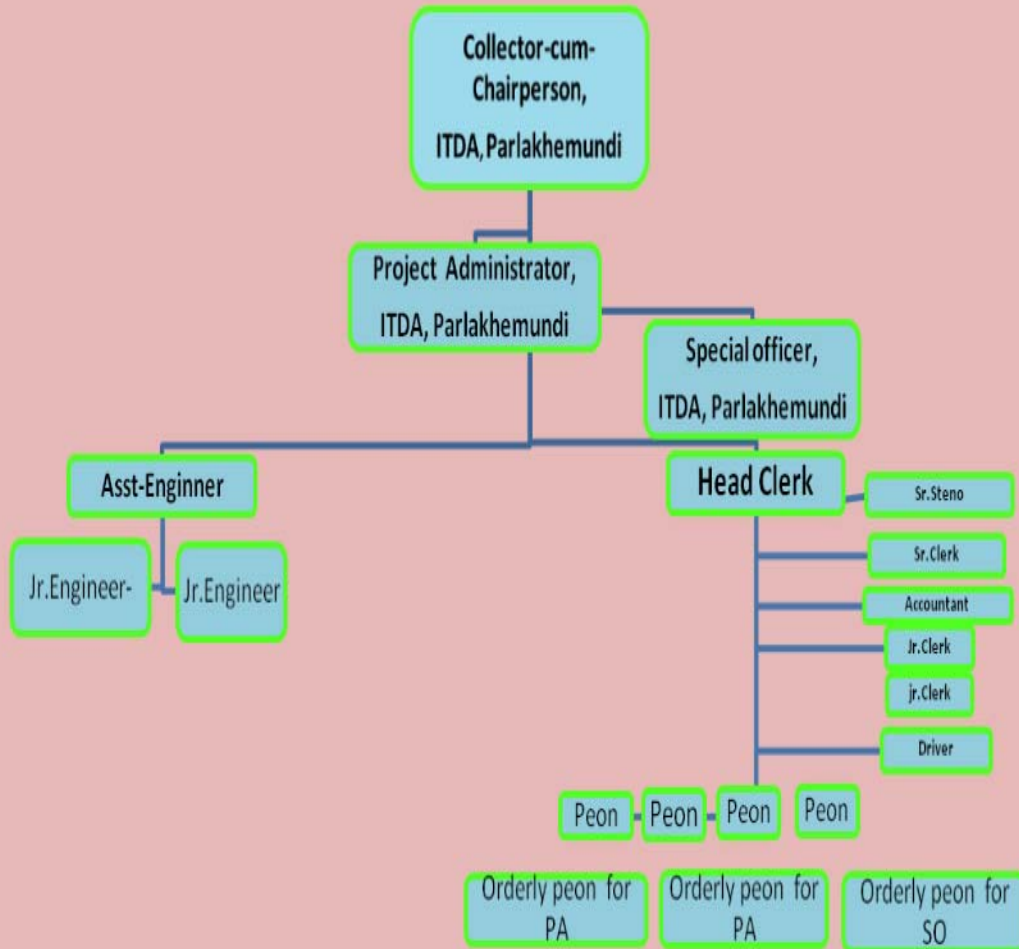
i) Staffing pattern:

Sl.No	Name of the post	No. sanctioned	No. in position	No. of vacancy
1.	Project Administrator	1	1	0
2.	Special Officer	1	1	0
3.	Asst. Engineer	1	1	0
4.	Junior Engineer	2	2	0
5.	Senior Steno	1	1	0
6.	Statistical Asst.	1	0	0
7.	Soil Conservation Asst	1	0	1
8.	Head Clerk	1	1	0
9.	Accountant (Sr. Clerk)	1	1	0
10.	Jr. Clerk	2	2	0
11.	Driver	1	1	0
12.	Peon	7	4	3

EXISTING STAFF POSITION OF ITDA, PARLAKHEMUNDI

Sl.No	Name of the post	Name	Phone Nos
1.	Project Administrator	Mr. Kalyan Kumar Rath	<u>8763344697</u>
2.	Special Officer	Ms. Gayatri Soren	<u>06815-222207</u>
3.	Asst. Engineer	Sri Santosh Kumar Mahapatro	9438686185
4.	Junior Engineer	Sri P.Venkatshu	9437275101
5.	Junior Engineer	Sri Simanchal Panda	9437325276
6.	Senior Steno	Sri Ashok Kumar Choudhury	9438457580
7.	Statistical Asst.	Vacant	
8.	Soil Conservation Asst	Vacant	
9.	Head Clerk	Sri Udayanath Nayak	9861962293
10.	Accountant (Sr. Clerk)	Sri Harikrushna Purohit	9437259830
11.	Development (Sr.Clerk)	Smt Kalpana Kumari Das	9861138182
12.	Jr. Clerk	Sri B.J.Rao	8093658568
13.	Jr.Clerk	M.s Sandhya Rani Sabar	9438122194
14.	Driver	Sri Damodar Gouda	9439133654
15.	Data-Entry –operator	Sri Monoranjan dash	<u>9439132701</u>
16.	Peon	Sri Narsingh Nepak	<u>06815-222207</u>
17.	Peon	Sri Balakrushna Patro	<u>06815-222207</u>
18.	Peon	Sri Trinath Barada	9692680550
19.	Peon	Sri Radha Krushna Padhiary	9438603011

ORGANISATIONAL STRUCTURE OF ITDA, PARLAKHEMUNDI



II) PROJECT LEVEL COMMITTEE (GOVERNING BODY) MEMBERS:

SL. NO	DESIGNATIONS	PORTFOLIOS
1.	Collector and District Magistrate, Gajapati	CHAIRMAN
2.	Project Administrator, ITDA,	Member Asst Secretary
3.	Sub- Collector, Paralakhemundi	Member
4.	MP, Berhampur Parliamentary Constituency (Loksabha)	Member
5.	MLA, Ramagiri	Member
6.	MLA, Paralakhemundi	Member
7.	Chairman, Panchayat Samiti, Mohana	Member
8.	Chairman, Panchayat Samiti, RUDayagiri	Member
9.	Chairman, Panchayat Samiti, Nuagada	Member
10.	Chairman, Panchayat Samiti, Rayagada	Member
11.	Chairman, Panchayat Samiti, Gumma	Member
12.	Deputy Secretary to Govt, SSDDepartment	Member
13.	Project Director, DRDA, Gajapati	Member
14.	GM, DIC, Gajapati	Member
15.	Deputy Director of Agriculture, Berhampur	Member
16.	Deputy Registrar of Cooperative Societies, Berhampur	Member
17.	Joint Director (SSD), RDC's office, Berhampur	Member
18.	CDMO, Gajapati, Paralakhemundi	Member
19.	EE, OLIC, Berhmpur	Member
20.	DRCS, Berhmpur	Member
21.	DDA, Berhmpur	Member
22.	EE, PED, Paralakhemundi	Member
23.	EE, PHD, Berhmpur	Member
24.	EE, RWS & S, Paralakhemundi	Member
25.	EE, RWDivision, Paralakhemundi	Member
26.	EE, R&B, Paralakhemundi	Member
27.	District Planning Officer, Gajapati	Member
28.	Inspector of Schools, Berhmpur	Member
29.	Lead District Manager, Andhra Bank, Paralakhemundi	Member
30.	President, BCCBank, Berhmpur	Member
31.	President, CoopLand Development Bank, Paralakhemundi	Member
32.	Divisional Forest Officer, Paralakhemundi	Member
33.	District AgrilOfficer, Paralakhemundi	Member
34.	CDVO, Paralakhemundi	Member
35.	ARCS, Paralakhemundi	Member
36.	DWO, Gajapati, Paralakhemundi	Member
37.	District Statistical Officer, Paralakhemundi	Member
38.	Asst Director of Textiles, Berhampur	Member
39.	Asst Director of Fisheries, Paralakhemundi	Member
40.	Horticulturist, Paralakhemundi	Member
41.	Asst Soil Conservation Officer, Paralakhemundi	Member
42.	Special Officer, LSDA, Serango	Member

43.	Special Officer, SDA, Chandragiri	Member
44.	BM, TDCC, Paralakhemundi	Member
45.	BM, TDCC, RUDayagiri	Member
46.	District Inspector of Schools, Paralakhemundi	Member

CO-OPTED TRIBAL MEMBERS

1.	Sri Siman Mandal	AT/PO : Kijang	PO: Nuagada Block
2.	Sri Mohan Bhuyan	AT/PO: Dombalo	Rayagada Block
3.	Hadia Beherdalai	AT/PO: Randiva	RUDayagiri Block
4.	Sri Purna Chandra Mallick	AT/PO: Govindapur	Mohana Block
5.	Sri Gunju Gomango	AT/PO: Bhubani	Gumma Block
6.	Smt Swarupa Karjee	AT/PO: Chandiput	Mohana Block-Tribal woman member

The PLC/GB shall meet at least once in a quarter

II. DISTRICT LEVEL MONITORING COMMITTEE:

In order to effectively monitor and review the implementation of TSP & SCSP in the district, Government in ST & SC Development Department vide their Resolution No3566/ST & SC dt27926 have constituted the District Level Monitoring Committee for TSP & SCSP under the Chairmanship of the Collector

In pursuance of the above resolution, the District Level Monitoring Committee for TSP and SCSP for Gajapati District is constituted as follows

SL. NO	DESIGNATIONS	PORTFOLIOS
1	Collector Gajapati	Chairman
2	MP Berhampur Lok Sabha Constituency	Member
3	MLA Paralakhemundi	Member
5	MLA, Mohana	
6	Chairman Zilla Parshad ,Gajapati	Member
7	Chairman Paralakhemundi Municipality	Member
8	Chairman Kashinagar NAC	
9	Project Director , DRDA Gajapati	Member
10	EE, Irrigation, Berhampur	Member
11	EE, Minor Irrigation, Berhampur	Member
12	EE, OLIC, Berhampur	Member
13	EE ,PHD, Berhampur	Member
14	EE ,RWS & S, Paralakhemundi	Member
15	EE ,R&B, Paralakhemundi	Member
16	EE ,R.W.Division, Paralakhemundi	Member
17	EE ,PED, Paralakhemundi	Member
18	District Planning Officer, Gajapati-	Member
19	Inspectors of Schools Berhampur	Member
20	Inspectors of Schools (SSD)Berhampur	Member
21	Divisional Forest Officer ,Paralakhemundi	Member
22	DPC, DPEP, Paralakhemundi	Member

23	District Agril Officer, Paralakhemundi	Member
24	CDMO,Gajapati, Paralakhemundi	Member
25	CDVO, Paralakhemundi	Member
26	ARCS, Paralakhemundi	Member
27	DWO Gajapati Paralakhemundi	Member
28	DSWO, Paralakhemundi	Member
29	Asst Director of Fisheries, Paralakhemundi	Member
30	District Statistical Officer ,Paralakhemundi	Member
31	Horticulturists, Paralakhemundi	Member
32	AHO (Oil Palm)Paralakhemundi	Member
33	Asst Soil Conservation Officer, Paralakhemundi	Member
34	District Inspector of Schools Paralakhemundi	Member
35	AHO, RUdayagiri	Member
36	Asst Director of Sericulture,Chandragiri	Member
37	Special Officer SDA, Chandragiri	Member
38	Special Officer ,LSDA, Serango	Member
39	District Employment Officers ,Gajapati ,Paralakhemundi	Member
41	Project Officer, NCLP Paralakhemundi	Member
41	Executive Officer, Paralakhemundi Municipality	Member
42	Executive Officer, Kashinagar NAC	Member
43	General Manager, DIC, Gajapati	Member
44	Project Administrator, ITDA, Paralakhemundi	Member Secretary

The District Level Monitoring Committee shall meet at least once in a month

iii) Implementation and Supervision:

At the State level, ST & SC Development Department administers the Programmes and effects necessary coordination among various departments entrusted with implementation of different programmes in the Sub-Plan area At the project level, the PLC under the chairmanship of the collectors The periodical review of Programmes is done at the state level by the ST & SC Development Department and at ITDA level the Collector/Project Administer are reviewing and supervising the programmes and sorting out problems faced in implementation

The works programme of ITDA is being primarily executed by the ITDA engineering personnel Some high cost projects are however, entrusted the concerned line departments The Assembly Constituency wise programmes are also being reviewed by the concerned MLA of the area

The ITDA is receiving funds under Special Central Assistance (SCA) to TSP and Article 275(1) of the Constitution In order to achieve the above goal

As per guidelines of Govt, 7 % of allocation under SCA is meant for Income Generating Schemes (IGS) for STs and 3 % of the allocation is meant for Infrastructure Development Schemes incidental to IGS

SCHOOLS RUN BY THE ST & SC DEVELOPMENT DEPARTMENT:

Sl No	Category of the school	Location	Block	Boarders strength
1.	Ekalavya Model Residential School	Chandragiri	Mohana	410
2.	Girls High School	N.Jhalarsingi	Nuagada	250
3.	Girls High School	Sialilati	R.Udayagiri	210
4.	Girls High School	Chandragiri	Mohana	317
5.	Girls' High school	Antaraba	Mohana	535
6.	Girls' High School	KCPur	Gumma	300
7.	Girls' High School	Laxmipur	Rayagada	340
8.	Boys High School	Dogharia	Nuagada	300
9.	Boys High School	Mohana	Mohana	302
10.	Boys High School	Ramagiri	RUdayagiri	405
11.	Boys High School	Chellagada	RUdayagiri	356
12.	Boys High School	Koinpur	Rayagada	290
13.	Boys High School	Rayagada	Rayagada	380
14.	Boys High School	Bada Kolakote	Gumma	300
15.	Ashram School	Tatarang	Nuagada	84
16.	Ashram School	Sundruba	RUdayagiri	202
17.	Ashram School	Bhubani	Gumma	300
18.	Res Sevashram	Porida	Gumma	260
19.	Res Sevshram	Damadua	Mohana	
20.	Sevashram	Gambhariganda	Mohana	
21.	Sevashram	Dhepaguda	Mohana	
22.	Sevashram	Lambapanka	Mohana	
23.	Sevashram	Ranikhama	Mohana	165
24.	Sevashram	Jubagam	Mohana	165
25.	Sevashram	Khani	Mohana	40
26.	Sevashram	Talasingi	Mohana	165
27.	Sevashram	Malaspadar	Mohana	40
28.	Sevashram	Chudungapur	Mohana	165
29.	Sevashram	Kontahuru	Mohana	165
30.	Sevashram	Luduru	Mohana	165
31.	Sevashram	Nundruguda	Mohana	40
32.	Sevashram	Anjaraba	RUdayagiri	
33.	Sevashram	Thatraj Colony	RUdayagiri	120
34.	Sevashram	Luburusing	RUdayagiri	
35.	Sevashram	Rupasing	RUdayagiri	120
36.	Sevashram	Dambadhia	RUdayagiri	
37.	Sevashram	RBhaliasahi	RUdayagiri	160
38.	Sevashram	Sabarpalli	RUdayagiri	192
39.	Sevashram	Abarsing	RUdayagiri	40
40.	Sevashram	Dabaraguda	RUdayagiri	165
41.	Sevashram	Raisingi	RUdayagiri	165
42.	Sevashram	Liobo	Nuagada	
43.	Sevashram	Kere	Nuagada	
44.	Sevashram	Parimal	Nuagada	40
45.	Sevashram	Atarsing	Nuagada	40
46.	Sevashram	Hirapur	Rayagada	
47.	Sevashram	Arutung	Rayagada	
48.	Sevashram	Allajhal	Rayagada	
49.	Sevashram	Mureisahi	Rayagada	
50.	Sevashram	Mandalsahi	Rayagada	40

51.	Sevashram	Jallo	Rayagada	160
52.	Sevashram	Burusingi	Rayagada	46
53.	Sevashram	Mukundapur	Rayagada	64
54.	Sevashram	Jollango	Rayagada	160
55.	Sevashram	Laxmipur colony	Rayagada	160
56.	Sevashram	Jangjangal	Gumma	
57.	Sevashram	Bapanibudi	Gumma	
58.	Sevashram	Anukundaguda	Gumma	160
59.	Sevashram	Tarava Colony	Gumma	157
60.	Sevashram	Dangusing	Gumma	160
61.	Sevashram	Baijhal	Gumma	140

Apart from the above, 74 nos Primary School Hostels (PSH) are also run by the SSDDepartment in this ITDA area as mentioned below:-

Sl.No	Location	GP	Block	No of boarders
1.	Korchabadi	Korchabadi	Mohana	40
2.	Ranikhama	Chandiput	Mohana	40(G)
3.	Birikote	Birikote	Mohana	40
4.	Govindapur	Govindapur	Mohana	40
5.	Paniganda	Paniganda	Mohana	40
6.	Jubagam	Chandragiri	Mohana	40
7.	Khani	Mohana	Mohana	40
8.	Guluba	Guluba	Mohana	40
9.	Talasingi	Sikulipadar	Mohana	40
10.	Damadua	Damadua	Mohana	40
11.	Malaspadar	Malaspadar	Mohana	40
12.	Chudungapur	Chudungapur	Mohana	40
13.	Kontahuru	Dambaguda	Mohana	40
14.	Luduru	Merapalli	Mohana	40
15.	Jeerango	Jeerango	Mohana	40
16.	Badasindhiba	Badasindhiba	Mohana	40
17.	Baghamari	Baghamari	Mohana	40
18.	Raipanka	Raipanka	Mohana	40
19.	Nudruguda	Pindiki	Mohana	40
20.	Antaraba	Antaraba	Mohana	40(G)
21.	RBhaliasahi	Subalada	RUdayagiri	40(G)
22.	Sugada	Mahendragada	RUdayagiri	40
23.	Randiva	Randiva	RUdayagiri	40
24.	Raisingi	Raisingi	RUdayagiri	40
25.	Sialiloti	Sialiloti	RUdayagiri	40
26.	Mangarajpur	Mangarajpur	RUdayagiri	40
27.	Dabarguda	Chellagada	RUdayagiri	40
28.	Sabarpalli	Sabarpalli	RUdayagiri	40
29.	Abarsingi	Abarsingi	RUdayagiri	40(G)
30.	Rumunda	RUdayagiri	RUdayagiri	40
31.	Attarsing	Attarsing	Nuagada	40(G)
32.	Saralapadar	Parimal	Nuagada	40
33.	Khajuripada	Khajuripada	Nuagada	40
34.	Keradanga	Keredanga	Nuagada	40
35.	Antarada	PAntarada	Nuagada	40

36.	Tangili	Betarsing	Nuagada	40
37.	Sambalpur	Sambalpur	Nuagada	40
38.	Nuagada	Nuagada	Nuagada	40
39.	Putrupada	Putrupada	Nuagada	40
40.	Kirama	Kirama	Nuagada	40
41.	Tabarada	Tabarada	Nuagada	40
42.	Titising	Titising	Nuagada	40(G)
43.	Luhangar	Luhangar	Nuagada	40
44.	Laxmipur Colony	Rayagda	Rayagada	40(G)
45.	Jollango	Jollango	Rayagada	40
46.	Pegada	Koradasing	Rayagada	40(G)
47.	Gandahati	Gandahati	Rayagada	40(G)
48.	Lalusahi	Narayanpur	Rayagada	40
49.	SKoradasing	SKoradasing	Rayagada	40(G)
50.	Amarsing	Koinpur	Rayagada	40(G)
51.	Mukundapur	Jeerango	Rayagada	40
52.	Mandalsahi	Dombalo	Rayagada	40
53.	Jallo	Loba	Rayagada	40
54.	Burusing	Puttar	Rayagada	40
55.	Gangabada	Gangabada	Rayagada	40
56.	Landusahi	Laxmipur	Rayagada	40(G)
57.	Parisal	Marlaba	Rayagada	40
58.	Lailai	Lailai	Rayagada	40
59.	Anukundaguda	Tarangada	Gumma	40(G)
60.	Rasikrajpur	Jhami	Gumma	40
61.	Porida	Porida	Gumma	40
62.	Namangada	Namangada	Gumma	40
63.	Angada	Bhubani	Gumma	40
64.	Gaiba	Gaiba	Gumma	40
65.	Jeeba	Jeeba	Gumma	40
66.	Tumula	Tumula	Gumma	40(G)
67.	Tarajasing	Serango	Gumma	40
68.	Tarava Colony	Tarava	Gumma	40
69.	Dangusing	Regidi	Gumma	40
70.	Baijhal	Baijhal	Gumma	40
71.	Munising	Munising	Gumma	40
72.	Bantalada	Ajayagada	Gumma	40
73.	Kujasing	Kujasing	Gumma	40
74.	Anukumba	Ukhura	Gumma	40

LIST OF CCA WORKING IN PRIMARY SCHOOL HOSTELS IN ITDA AREA

Block	Sl.No	Name of Primary Schools Hostels	Name of CCA
R.Udayagiri	1	Sugada	Ujala Badaraita
	2	Mangarajpur	Rama Mandal
	3	Rumunda	Aliya Raika
	4	Bhaliasahi(G)	Kumari Runi Gouda
	5	Raisingi	Rohit Kumar Nayak
	6	Sialilati	Anadi Charan Paik
	7	Randiva	Sunaram Bahera Dalai
	8	Sabarpalli	Bhima Nayak
	9	Abarsingi(G)	Dandapani Gouda
	10	Dabarguda	Hadi bandhu Behera
Mohana	11	Birikota	Devendra Paricha
	12	Paniganda	Jayanta Mandal
	13	Karachabadi	Karana Bhuyan
	14	Baghamari	Binod Ranasandha
	15	Raipanka	Harish Majhi
	16	Kantahuru	Kartik Mallick
	17	Malasapadar	Mathew Gamango
	18	Nundruguda	Duryodhan Karjee
	19	Talasingi	Sankar Raita
	20	Jubagam	Ganesh Nayak
	21	Ranikhama(G)	Labanya sabara
	22	Antaraba(G)	Bijaya Laxmi Pattnaik
	23	Badasindhiba	Suman Mallick
	24	Guluba	Balakrushna Pradhan
	25	Khani	Abala Sabar
	26	Govindapur	Parsuram Badaraita
	27	Jeerango	Mohana Dalai
	28	Lundru	Jagannath Karjee
29	Chudungapur	Brundaban Mallick	
30	Damaadua	Neelambar Pujari	
Nuagada	31	Nuagada	Indam Badaraita
	32	Tabarada	Obed Raika
	33	Saralapadar	Manik Bhuyan
	34	Kerdango	Phillip Raita
	35	Titising(G)	Ajaya Kumar Paika
	36	Sambalpur	Rama Kanta Karjee
	37	Putrupada	Jayaram Badaraita
	38	Khajuripada	Antarjyami Satapathy
	39	Tangili	Markanda Raita
	40	P.Antarada	Kundra Dalabehera
	41	Luhangar	Saitin Dalabehera
	42	Atarasingi (G)	Prafulla Lohara

	43	Kirama	Aso Raita
Gumma	44	Bantilada	Muju Bhuyan
	45	Jeeba	Masan Bhuyan
	46	Namnagada	Syama Sundar Bhupal
	47	Tarjasing	Setha Raika
	48	Kujasingi	Hari Krushna Kumbha
	49	Angada	Girijana Gamango
	50	Dangu singi	Gamial Badaraita
	51	Tarava Colony	Jiosh Nayak
	52	Anukundaguda(G)	Gabbrial Raita
	53	Parida	Madhusudan Sabar
	54	Baijhal	Santosh Kumar Gouda
	55	Tumulo(G)	Ranjeeta Sabar
	56	Gaiba	Parsuram Bindhani
	57	Munisingi	Susila Majhi
	58	Rasikarajpur	Karavulu Sabar
	59	Anukumba	Gasina Raita
Rayagada	60	Parisala	Bhagirathi Bhuyan
	61	Pegada(G)	Trilochan Routa
	62	Landusahi (G)	Prabhakar Gamango
	63	S.Karadasingi (G)	Padmabati Bhuyan
	64	Lailai	Jagannath Sabar
	65	Mandalsahi	Jadumani Bhuyan
	66	Jallango	Sudam Raita
	67	Jallo	Navin sabar
	68	Laxmipur(G)	Binidini Panda
	69	Gangabada	Jagabandhu sabar
	70	Gandahati (G)	Bachia Sabar
	71	Lalusahi	Subash Raita
	72	Amarsingi (G)	Lakshman Bhuyan
	73	Mukundapur	Basudev Badanayak
	74	Burusingi	Khetrabasi Mandal

FOREST RIGHT ACT-**BRIEF NOTES ON THE SCHEDULED TRIBE AND OTHER TRADITIONAL FOREST DWELLER'S ACT.**
2006 DISTRICT GAJAPATI

❖ Total population	:	5,18,837
❖ Total S.T. population	:	2, 63,476 [50.8 %]
❖ Total S.C. population	:	38,928 [7.5 %]
❖ Total other population	:	2,16,433 [41.7 %]
❖ Total geographical area	:	4325 sq. km.
❖ Total revenue forest area	:	Ac 136052.245
❖ Total reserve forest area	:	1666.67 Sq. Kms. (i.e. 1, 66,607 Hac.)
❖ Total numbers of Revenue Villages	:	1528
❖ Total FRCs constituted	:	1449
❖ Total UI Villages	:	77
❖ FRCs not constituted	:	2
❖ Total nos. of applications received by FRCs	:	44340 [Ac101579.5]
❖ Total numbers of claims forwarded to SDLC	:	27755 [Ac 58342.51]
❖ Total claims enquired and may prepared by the R.I.s		27755
❖ Total claims submitted to District Level Committee by the Sub-divisional Committee for approval		27755
❖ Total claims pending at SDLC for approval after enquiry		
Claims finalized by the DLC		27755
❖ Total Community Rights claims		52
❖ Data Entry Operators Engaged		7 nos
❖ Survey knowing persons engaged		26 nos
❖ Total villages in which survey completed		1449

MULTI SECTORAL DEVELOPMENT PROGRAMME

Sl. No.	Name of the project for Gajapati District (Orissa)	Sharing ratio.	No. of units.	Unit cost	Central Share	State share	Total cost	1st installment amount released. 50 % of unit cost.			2nd Installment Released 50 % of unit cost			Total Received	Balance to be received
								Central	State	Total	Central	State	Total		
Ist phase.															
a)	Construction of AWC/Mini AWC	100	151	3.00	453.00	---	453.00	226.50	0.00	226.50	226.50		226.50	453.00	-
b)	Construction of building for PHCs.	85.15	15	6.70	85.43	15.07	100.50	39.87	7.04	46.90	0.00	0.00	0.00	46.90	53.60
c)	Construction of ACRs in High Schools.	75.25	11	3.00	24.75	8.25	33.00	11.25	3.75	15.00	13.50	4.50	18.00	33.00	-
2nd phase.															
	Indira Awas Yojana	75.25	5740	0.35	1506.75	502.25	2009.00	753.38	251.12	1004.50	753.37	251.13	1004.50	2009.00	-
3rd Phase															
a)	Toilt with water facility	75.25	64	5.00	240.00	80	320.00	120.00	40.00	160.00	0.00	0.00	0.00	160.00	160.00
b)	Construrction of 2 nos of ITI at Gumma & Chandragiri	100	2	405.00	810.00	-	800.10	400.05	-	400.05	0.00	0.00	0.00	405.00	400.05
				Total	3119.93	605.57	3715.60	1551.05	301.91	1852.95	993.37	255.63	1249.00	3106.90	613.65

GUIDELINES ON SCHEMES INCLUDED UNDER SCA TO TSP

In letter No44375 dt18.12.2006 of Govt in ST & SC Development Department, the guidelines for utilization of Special Central assistance to tribal Sub-Plan (SCA to TSP) has been reiterated as follows:

1 i) The tribal population living below the poverty line should alone be covered under SCA financed activities, with special emphasis on raising their socio-economic status to that of the rest of the population in the Block/District/State

ii) SCA to TSP should be utilized for filling up critical gaps in both the primary schemes supporting Family/SHG/Community based employment-cum-income generation activities and the infrastructure incidental thereto However, not more than 3% SCA received can be permitted for purpose of developing infrastructure In case of development of infrastructure requires greater investment, funds from other ongoing programmes like MSDP, Forest Right Act, State-Plan, Non Plan, Integrated Action Plan, SGRY, BRGF, WADI etc should be dovetailed and village communities persuaded to contribute labour to complete the project Works to be taken up should be of durable nature and should meet technical standards The projects should be cost effective The technical sanction would be accorded as per rules of the Government and Administrative Approval given by the competent authority Records have to be maintained for the Assets created giving details of cost, date of start date of completion etc

iii) While planning for Family/SHG/Community based employment-cum-income generation activities, every effort should be made to converge the services, manpower and infrastructure already available under tribal related sectors

iv) While formulating SCA funded TSP activities, priority should be given to the development of the most neglected tribals living in the Forest Villages

v) Innovative projects for creating employment-cum-income generation activities based on the felt needs of the local tribals should be given priority To this effect, the ground level functionaries should also be geared up effectively so as to attract optimal institutional finance

vi) Long term area specific micro planning by taking into consideration ITDAs and the Blocks/Clusters therein as geographical units should be taken up under SCA to TSP Multi-disciplinary agencies could be entrusted with the task of preparing such long term plans indicating estimates with the task of funds from the State Plan (TSP), the Central Plan (SCA to TSP) and through the grants-in –aid under Article 275(1) of the Constitution.

vii) Since SCA to TSP is an additive to the State plan, and has to be utilized as a gap filler to implement the schemes being taken up out of the TSP funds earmarked under the Annual state Plan, it has to be ensured that the schemes funded out of SCA to TSP are supplementary to the schemes being taken up out of TSP funds earmarked in the annual State Plan In other words, the SCA is not an open ended stand alone programme under which funds can be utilized in violation of the guidelines prescribed for implementation of income generating schemes and infrastructure development projects under the State Plan including Central Sector and centrally sponsored similar ongoing schemes

viii) Whenever a conjunctive flow of funds can be ensured from the other ongoing development programmes of District and State Plan activities, every effort should be made to dovetail all ongoing programmes so as to have a better spatial and demographic coverage. The Government encourages a more focused approach leading to perceptible change in the tribal areas rather than resources being spread too thin under various sectors, in a disintegrated fashion.

ix) Projects /Schemes should be so drawn up that issues affecting tribal women should be brought centre stage and their participation, right from the stage of formulation to implementation of various developmental projects, needs to be ensured. To this effect at least 3% of funds should be kept apart and shown under the 'Women's Component' and spent for income generating activities of women beneficiaries.

x) It is a pre-requisite to formulate specific schemes/programmes that have a direct bearing on the economic development of tribals as suitable to their socio-economic and ecological situation. The schemes /programmes thus formulated should be discussed in detail by the Project Level Committee (PLC) before their approval. It is to be noted that approval to the projects and schemes to be accorded by the PLC is in accordance with the SCA guidelines.

xi) The Special programmes/schemes thus formulated/proposed should necessarily reflect physical and financial targets with specific time frame, to facilitate monitoring in implementation of the same, from time to time.

xii) In view of the diverse and varied physical and socio-economic conditions of the tribals, the SCA funds directed especially to the poverty alleviation programmes should necessarily support such innovative income generating and employment activities/programmes with sustainable relevance/utility to the tribal beneficiaries.

xiii) While utilizing the SCA funds for the development of Forest Villages and the tribals living therein, it is essential not only to identify their specific problems but also to propose specific package for their development by specially formulating specific schemes that are not only suitable to the prevailing conditions but also ensuring their effective synchronization with the programmes of Forest Department viz JFM. Similar special attention should also be accorded to the shifting cultivators by devising suitable/alternative income generating and self-employment activities to be supported with SCA funds.

xiv) Detailed information about all the projects sanctioned/funded under SCA to TSP along with the progress for their implementation needs to be kept up-to-date at the center, from time to time to facilitate effective monitoring.

xv) People's participation is a thread that runs across the tribal fabric and the approach towards tribal development should, therefore, ensure that their strength is harnessed.

xvi) The ground level mechanism should be effectively geared up so as to attract optimal institutional finance for enhanced income generating activities.

xvii) Adherence to the provisions of the Panchayat Raj Act of 1992 and the provisions of the Panchayats (Extension to the Scheduled Areas) Act of 1996 in planning and implementation of TSP, including the SCA funds, should be ensured in letter and spirit.

2. It is noticed that Income Generating Schemes (IGS) are being implemented in many places without institutional loan linkage or involvement of beneficiaries in terms of their equal matching contribution. There are no provisions under the State plan including the TSP to provide subsidy assistance under Income Generating Schemes to the families below the poverty line in cash or in shape of income generating assets without institutional loan linkage. Distribution of assets like sprinkler sets, tractors, pump sets, power tillers, milch cows etc under the Income Generating Schemes of SCA among the beneficiaries without the corresponding bank loan, therefore, would not be permissible. Similarly, the release of SCA incentives to the accounts of self-help groups presupposes matching contribution of beneficiaries or institutional loan for undertaking economic activity by self-help groups. By and large, the guidelines of SGSY and other beneficiary oriented schemes need to be followed to implement IGS components of SCA. The only major difference is that the component of subsidy in case of tribal families below the poverty line to be assisted through SCA grant is 5% subject to the ceiling of Rs1/- per beneficiary. The admissible unit cost or subsidy/assistance under the income generating scheme to be implemented under the SCA in no case shall be more than what is available under any other similar scheme being implemented in the State Plan including the central sector or the centrally sponsored programmes.
3. Under IGS component of SCA, land based viable schemes and thrust areas should be identified keeping in view the aptitude and adaptability of beneficiaries and potential for development. Implementation of land based scheme may be undertaken through the beneficiaries even if the bank loan is not availed, if the beneficiary agrees to implement a particular land based scheme as per the NABARD approved unit cost by contributing labour equal to the value of loan amount. This arrangement may be extended to the schemes like land development (Bench terracing), mulberry sericulture, cashew plantation, horticultural plantation including banana, sabai grass plantation and other agro forestry work. In case of land based schemes taken up under IGS component without bank the bank loan, the scale of assistance should not exceed Rs12/- per acre. While there would be no such ceiling when the land based scheme is implemented through bank loan linkage.
4. The unit cost approved by NABARD for implementing Income Generating Schemes under SGSY and non-land based beneficiary oriented schemes should be followed while allowing subsidy assistance to the beneficiaries. In other words, 5% of the unit cost subject to the ceiling of Rs1/- could be allowed to an individual (ST) family as subsidy. However, there is no upper limit of subsidy under minor irrigation sectors if the scheme is to be implemented with bank loan linkage. For self-help groups, the subsidy would be 5% of the cost of scheme, or per capita subsidy of Rs1/- or 125 lakh for the whole group, whichever ever is less. Disbursement of loan and subsidy should be as per the guidelines of SGSY implemented by Panchayat raj Department.
5. Implementation of income generating schemes should be done as far as possible with a cluster approach. The aptitude of beneficiary families, their felt need and viability of schemes should be

taken into account in totality The forward and backward linkages should not be lost sight of while implementing the scheme

6. Considering the potential for irrigational development and success under this sector in the tribal villages, execution of community irrigation projects should be taken up in larger scale in tribal area following the norm of people's participation as prescribed in the Biju Krushak Yojana Such projects where at least 9% beneficiaries, both in terms of families and area, are tribals in the BPL category, can be developed as Income Generation Schemes (IGS) for these category of beneficiaries
7. Those of the micro-irrigation projects which do not conform to the criterion of projects under the Biju Krushak yojana, but are exclusively for tribals can be taken up like a land development scheme under the IGS component as given in para- 3
8. Sprinkler Irrigation System can be taken up through ITDA depending upon the viability and with the participation of target group of beneficiaries The tribal farmers should be organized in societies before execution of the projects In case, the execution is not possible through society, the ITDA may do the work with the help of any expert organization following guidelines prescribed for execution of any other irrigation projects The scale of assistance shall not exceed Rs12/- per acre If the community lifts irrigation points are executed under IGS component of SCA without bank loan, equal involvement of beneficiaries in terms of voluntary labour contribution towards construction of field channels, land development etc should be ensured
9. No income generating schemes or infrastructure development should be imposed/ implemented without participation of beneficiaries A demand through awareness should be created for the implementation of individual as well as community projects, even if beneficiaries are found indifferent at first for some reasons or other
10. Individual families could be given a package of schemes, subject to the ceiling of subsidy In other words, more than one member of a family can be assisted in more than one schemes following approved cost norms Land development and agricultural demonstration should be taken up in the ayacut area of community irrigation project, simultaneously Inter-cropping should be encouraged wherever agro forestry work and horticultural plantations including cashew plantation, have been taken up
11. In areas affected by shifting cultivation and degradation of forests, agro forestry work should be taken up in hill slopes involving tribal beneficiaries The Slopes Agriculture Land Technology (SALT) being tried by OTELP should be followed by all ITDAs and Micro Projects Fruit bearing trees like mango, guava, jack fruit, tamarind, cashew should be the main agro forestry species to be planted in the slopes with votive bonding of fiber plants like sisal Beneficiaries should be given necessary inputs like seeds, seedlings, fertilizer, pesticide etc for agro forestry work and they should be persuaded to take up plantation Government Agencies and NGOs should be engaged as facilitators and not as Executing Agencies

12. Backyard plantation should be taken up on limited scale selectively considering the results achieved in the past. The tendency of releasing funds to the Horticulturists and DAO for backyard plantation, vegetable demonstration and agriculture mini-kits without getting the list of beneficiaries with necessary details should be avoided. Plantation and mini-kits cards should be handed over to the beneficiaries showing the prescribed components of inputs and their value. At the time of taking up demonstration, instead of taking up demonstration in large number of villages, limited number of villages with cluster approach should be covered. The unit cost prescribed by subject matter Department should be followed strictly for such demonstrations. Involvement of beneficiaries is a must.
13. Implementation of income generating schemes has given better results, wherever beneficiaries from the younger age groups and women are involved from the beginning. Construction of smaller infrastructure development projects may also be entrusted to the groups of such beneficiaries, wherever possible.
14. Wherever implementation of land based schemes without bank loan linkage is proposed, applications should be processed by ITDAs/Micro Projects/Blocks, instead of sponsoring them to the Banks. Records should be maintained clearly and undertaking should be obtained from the beneficiaries that in the event inputs/subsidy, being misused by them, the entire amount infructuous expenditure would be realized from them as arrears of land revenue.
15. Infrastructure development should create permanent assets and would include CD works on the tribal village link roads, construction of/reconstruction of minor irrigation projects, development of tribal market yards etc.

STATUS OF SELF HELP GROUP UNDER ITDA.PARLAKHEMUNDI ,GAJAPATI DISTRICT

Year	Name of the Block	No of SHG	No of BPL	Loan Componant	Subsidy	Project Cost	Activities
2005-06	Gumma	5	49	610000	490000	1100000	MFP, Dal Processing, Goatery, Rice haller, Small Transport, Brick Making, Tent house, Cashew processing, fishing net
	Rayagada	10	109	1060400	987700	2048100	
	Nuagada	10	102	1000000	1000000	2000000	
	R.Udayagiri	7	90	700000	700000	1400000	
	Mohana	12	131	1220000	1180000	2400000	
	Total	44	481	4590400	4357700	8948100	
2006-07	Gumma	8	88	1504200	860000	2364200	
	Rayagada	12	131	1260000	1140000	2400000	
	Nuagada	10	126	840000	800000	1640000	
	R.Udayagiri	21	222	200000	1600000	1800000	
	Mohana	10	121	1000000	1000000	2000000	
	Total	61	688	4804200	5400000	10204200	
2007-08	Gumma	11	110	1105000	995000	2100000	
	Rayagada	12	124	1220000	1180000	2400000	
	Nuagada	16	137	2345000	1305000	3650000	
	R.Udayagiri	12	138	1530000	1270000	2800000	
	Mohana	17	189	1900000	1700000	3600000	
	Total	68	698	8100000	6450000	14550000	
2008-09	Gumma	9	86	1295000	805000	2100000	
	Rayagada	11	115	1230000	970000	2200000	
	Nuagada	11	109	1180000	1020000	2150000	
	R.Udayagiri	10	102	1430600	955000	2385600	
	Mohana	9	103	1328660	903600	2232260	
	Total	50	515	6464260	4653600	11067860	
2009-10	Gumma	22	217	3605425	1995000	5600425	
	Rayagada	9	84	1030000	770000	1800000	
	Nuagada	10	97	1330000	920000	2250000	
	R.Udayagiri	25	212	4489900	2115000	6604900	
	Mohana	24	240	5513600	2450000	7963600	
	Total	90	850	15968925	8250000	24218925	
2010-11	Gumma	14	136	4075000	1355000	2720000	
	Rayagada	3	24	600000	240000	360000	
	R.Udayagiri	10	96	3027600	960000	2067600	
	Mohana	3	37	674800	311200	363600	
	Total	30	293	8377400	2866200	5511200	
Grand Total		343	3525	48305185	31977500	74500285	

Statement of Subsidy amount released in favour of the SHGs / Beneficiaries under Bankable Loan Linked Scheme during the year 2010-11 under SCA to TSP									
Sl.No	Name of Block	Name of Bank Nodal Bank	Name of Financing Bank	Name of SHG	Name of Activity	No of Members BPLs in the SHG	Project Cost (Loan amount)	Subsidy amount Released	
1	2	3	4	5	6	7	8	9	
1	Gumma	SBI,Parlakhemundi	S.B.I,Gumma	Martha Shakti Dal, Upor Sari, Ukhura GP	MFP & Seasonal Bussiness	10	200000.00	100000.00	
2				Ashirbad Swayam Savak, Maliara	Bricks Making	10	200000.00	100000.00	
3				Merry Shakti Dal,Banumda	Bricks Making	8	300000.00	80000.00	
4				Indira Shakti Dal,Banumda,Baijhal	MFP & Seasonal Bussiness	8	200000.00	80000.00	
5				Maa Mangala Mahila Mandal, Tumkur, Badakolakote	MFP & Seasonal Bussiness	10	300000.00	100000.00	
6		SBI,Serango			Jajuleo Shakti Dal,Bhubani, Bhuani GP	MFP & Seasonal Bussiness	10	200000.00	100000.00
7					Jhansirani Shakti Dal,Ragidi, Tumulo	MFP & Seasonal Bussiness	9	200000.00	90000.00
8					Queen shakti dal Kumundia,Serango	Tractor & Trolley	11	675000.00	110000.00
9					Bijli SHG,Ayada	Goat rearing	11	300000.00	110000.00
10					RGB,Parlakhemundi	RGB,Hadubhangi		Jasmeni Mahila Sangh, G.K.Pur,Parida	Goat rearing
11		Maa Mangala Mahila Mandal, Gopal Parida	Goat rearing	10				300000.00	100000.00
12		DWCRA Group,Gopalpur,Parida	MFP & Seasonal Bussiness	10				300000.00	100000.00
13		Santi Priya Group,U.Tandrang, Gaiba	Goat rearing	9				300000.00	90000.00
14		Rashmi Swayam Sahaka Dal,Almaida,Brushaba	Goat rearing	7				300000.00	70000.00

15	Mohana	Canara Bank,Chandragiri	Canara Bank, Chandragiri	Mahalaxmi Swayam Sahayak Dal,Labarsingi	Brick Making	8	212400.00	80000.00
16		UBI,Mohana	UBI,Aliganda	Tabita A. S .Dal, Dekapanka,	Goatery	14	250000.00	125000.00
17		Indian Bank, Parlakhemundi	Indian Bank,Chandiput	Mariyama Mahila Mandal,Guriguda	Brick Making	15	212400.00	106200.00
18	R.Udayagiri	SBI, Parlakhemundi	SBI, R.Udayagiri	Marium SHG, At:Bayaguda	Goatery	10	266300.00	100000.00
19		SBI, Parlakhemundi	SBI, R.Udayagiri	Mery Mission Shakti, At:Luhakhunti	Goatery	7	266300.00	70000.00
20		SBI, Parlakhemundi	SBI, R.Udayagiri	Jay Maa Bhabani SHG, At:Kandulasahi	Goatery	10	266300.00	100000.00
21		SBI, Parlakhemundi	SBI, Mahendragiri	Ranjani Mission Shakti, At: Toi	Seasonal Business	10	350000.00	100000.00
22		SBI, Parlakhemundi	SBI, Mahendragiri	Rasmi Mission Shakti, At-Kanjamera	Seasonal Business	8	350000.00	80000.00
23		SBI, Parlakhemundi	SBI, Mahendragiri	Aloka Mission Shakti, At: Gandupada	Seasonal Business	12	350000.00	120000.00
24		RGB, Parlakhemundi	RGB, Cheligada	Maa Laxmi SHG, At: Sindrangi	Seasonal Business	10	350000.00	100000.00
25		RGB, Parlakhemundi	RGB, Cheligada	Subhasri Mahila Samiti, At: K.M. Bhaliasahi	Brick Making	9	212400.00	90000.00
26		RGB, Parlakhemundi	RGB, Ramagiri	Maa Santosi SHG, At: S.Gudisahi	Goatery	10	266300.00	100000.00
27		RGB, Parlakhemundi	RGB, Ramagiri	Maa Laxmi Mission Shakti, AT: Fuka	Seasonal Business	10	350000.00	100000.00
28	Rayagada	RGB, Parlakhemundi	RGB, Narayanpur	Rajanigandha SHG, At: Rasibada	Seasonal Business	7	200000.00	70000.00
29		Syndicate Bank, Rayagada	Syndicate Bank, Rayagada	Muktidata SHG, AT: Kanchimunda	Goatery	9	200000.00	90000.00
30		Syndicate Bank, Rayagada	Syndicate Bank, Rayagada	Saraswati SHG, At: Champasahi	Goatery	8	200000.00	80000.00
						293	8377400	2866200

GUIDELINES FOR PROJECTS UNDER ARTICLE 275(1)

The felt need for the ITDA should be given emphasis Thrust be given to include irrigation projects, roads and bridge projects to provide missing links, repair renovation of schools and hostels of ST & SC Development Department. The projects suggested must be justified indicating the benefits that would accrue to the tribals.

The ongoing project list under SCA to TSP and project list under Article 275(1) is attached

PHYSICAL AND FINANCIAL PROGRESS OF SCHEMES UNDER ITDA,PARLAKHEMUNDI

Year	Schemes	Allotment received (Rs in Lakh)	Expenditure (Rs in Lakh)	Total Nos of Projects	Projects Completed	Remarks
2010-11	SCA to TSP	385.69	147.80	25	In progress	30 SHGs assisted Subsidy through Bank loan linkage schemes 81 nos of ST unemployed Youths are undergoing training in JITM ,Parlakhemundi
	Article 275(1)	205.54	121.25	47	32	The fund received on dated 30.09.2010. necessary step is being taken to take up works out of the available fund
	Central Plan(52 newly opened Girls High School)	79.74	0	2	0	works in Progress
	State –Plan (Other Charges) Basic amenities for Boarders, Purchase of Cots ,Utensils etc	41.28	41.28	5.26	0	Supply of Steel Bed cot and utensils to SSD Schools in progress
	State- Plan(2009-10)	5104.5	1635.50	123	20	Construction of Girls Hostel Building -51 Nos Construction of Boys Hostel Building -72

LIST OF PROJECTS TO BE TAKEN UP UNDER ARTICLE 275(1) DURING 2010-11

Sl.No	Name of the Projects	Type of Work	Estimated Cost (Rs)
1.	Const of Land leveling & Stone pitching etc at EMRS, Chandragiri	Creation of fixed assets	500000
2.	Tile flooring for laboratories, library room & Toilets of class room at EMRS Chandragiri	Creation of fixed assets	500000
3.	Infra Dev to Luduru PSH	Creation of fixed assets	400000
4.	Infrastructure Development to ST Girls Hostel Building of Mohana H/S	Creation of fixed assets	500000
5.	Const of Boundary wall at Souri PSH	Creation of fixed assets	500000
6.	Completion of Hostel Building and Internal Electrification at Tarjasingi PSH	Creation of fixed assets	225000
7.	Const of Boundary wall at Khani SS	Creation of fixed assets	400000
8.	Completion of B.Wall at Tarava colony PSH	Creation of fixed assets	150000
9.	Construction of Dinning cum Kitchen at Sundruba A/s	Creation of fixed assets	450000
10.	Const of Kitchen -cum dining hall for ST girls in Badakolakote Girls Hostel	Creation of fixed assets	500000
11.	Const of B.wall at Mukundapur PSH	Creation of fixed assets	400000
12.	Completion of Boundary wall at Jallango SS	Creation of fixed assets	400000
13.	Const of Boundary wall at Dhepaguda SS	Creation of fixed assets	400000
14.	Const of Dinning cum Kitchen for ST Girls at Mohana H/S	Creation of fixed assets	500000
15.	Const of Dinning cum Kitchen for ST Girls at Kantahuru SS	Creation of fixed assets	500000
16.	Const of latrine at Sialilati GHS	Creation of fixed assets	350000
17.	Const of latrine at N.Jhalarsingi GHS	Creation of fixed assets	350000
18.	Completion of Classroom building at N.Jhalarsingi GHS	Creation of fixed assets	500000
19.	Completion of Classroom building at Sialilati GHS	Creation of fixed assets	500000
20.	Repair & Improvement to Hostel Building of Parida SS in Gumma Block	Creation of fixed assets	500000
21.	Const of CC road inside EMRS,Chandragiri	Creation of fixed assets	500000
22.	Const of Sanitary well with motor for water supply for Girls Hostel at Chandragiri GHS	Creation of fixed assets	500000
23.	Const Of Dinning cum Kittchen at Talasingi SS Mohana Block	Creation of fixed assets	500000
24.	Renovation to Boys hostel at Dogharia H/s Nuagada Block	Creation of fixed assets	300000
25.	Const of B.Wall at Parimala SS in Nuagada Bl	Creation of fixed assets	500000

26.	Const of Upstair H/B at Kahajuripada PSH in Nuagada	Creation of fixed assets	500000
27.	Const of Pucca road inside Sialilati GHS	Creation of fixed assets	500000
28.	Const of B. wall at Chellagada H/s in R.Udayagiri Block	Creation of fixed assets	500000
29.	Const of ST Boys Hostel Building at Randiva H/s	Creation of fixed assets	500000
30.	Const of B.wall at Randiva H/s	Creation of fixed assets	400000
31.	Completion of B. wall at Raisingi SS in R.Udayagiri Block	Creation of fixed assets	400000
32.	Const of Staff Qtr at Laxmipur SS Rayagada Block	Creation of fixed assets	500000
33.	RE-Const of Staff Qtr at Rayagada H/s	Creation of fixed assets	500000
34.	Completion of B.wall at Lalusahi PSH	Creation of fixed assets	400000
35.	Const of Upstair H.B at Koinpur H/s	Creation of fixed assets	500000
36.	Const of Pucca Road in Rayagada H/s	Creation of fixed assets	400000
37.	Const of Pucca Road with Internal Electrification at Laxmipur SS	Creation of fixed assets	350000
38.	Const of Back B. wall at Rayagada H/s	Creation of fixed assets	500000
39.	Infra Dev to Bhubani A/s	Creation of fixed assets	500000
40.	Const of B. wall at Rasikarajpur PSH	Creation of fixed assets	500000
41.	Completion of B. wall at Badakolakote HS (Part Allocation)	Creation of fixed assets	29000
42.	Completion of ST girls Hostel building at Rupasingi SS	Creation of fixed assets	200000
43.	Construction of Approach to the CD work on Burupada to Kamalapur Road in Jeerango GP	Communication	500000
44.	Construction of River Protection work at CD work on Randiva to Kharigumma Road	Communication	500000
45.	Const of approach work and retaining wall for CD work on Kharimera to Khariguda Road	Communication	250000
46.	Const of CD work on the road from Kharipada to Dambadhia in Chelligada GP	Communication	400000
47.	Const of CD work on the road from Nuasahi to Khamarisahi in Mahendragada GP	Communication	400000
48.	Const to the approach to the CD work on the road from Kusapali to R.Nuasourasahi Road in Mahendragada GP	Communication	500000
Total:-			20554000

STATE-PLAN-2009-10

SANCTIONED VIDE -10644/SSD DT-15.03.2010 (OCF ADVANCE)- RS 5104.50 LAKHS

NO OF PROJECTS SANCTIONED-123 NOS(GIRLS-51,BOYS-72)

NAME OF EXECUTING AGENCY-ITDA,PARLAKHEMUNDI

Level of Execution	Girls Hostel	Boys Hostel	Total
Total Nos of work for which tender finalised	51	72	123
Foundation level	5	26	31
Plinth Level	8	17	25
Roof Level	7	4	11
Slab caste for G.Floor	8	9	17
Upstair Portion	2	2	4
Linthel Level	6	4	10
Finishing stage	1	2	3
Completed	14	5	19
Not started	1	2	3
Total	52	71	123
Total Expenditure till 30 June- 2011 (Rs)	9040000	7315000	16355000

**List of 100 seated ST Girls Hostel Building in Gajapati District.
(State Plan-09-10)**

Sl. No	Name of the Block	Name of the School where to be constructed	Executing Agency	Amount Released	Cumulative Expenditure	Remarks
1	Rayagada	Mukundapur S/s	ITDA,Parlakhemundi	3500000	1800000	Roof Level
2	Rayagada	Mandalsahi S/S	ITDA,Parlakhemundi	3500000	1100000	Lintel Level
3	Rayagada	Landusahi PSH	ITDA,Parlakhemundi	3500000	2300000	Roof cast of G.Floor
4	Rayagada	Kardasingi U P S	ITDA,Parlakhemundi	3500000	3500000	Completed
5	Rayagada	Hirapur S/S	ITDA,Parlakhemundi	3500000	1000000	Lintel Level
6	Rayagada	Pegada PSH	ITDA,Parlakhemundi	3500000	3500000	Completed
7	Rayagada	Lalusahi P S H	ITDA,Parlakhemundi	3500000	3500000	Finishing work in progress
8	Rayagada	Gandahati P S H	ITDA,Parlakhemundi	3500000	3500000	Completed
9	Rayagada	Badamundisahi UPS	ITDA,Parlakhemundi	3500000	1400000	Lintel Level
10	Rayagada	Burusingi S/S	BDO,Rayagada	3500000		Foundation level.
11	Mohana	Nundruguda S/s	ITDA,Parlakhemundi	3500000	3500000	Completed
12	Mohana	Dhepaguda S/s	ITDA,Parlakhemundi	3500000	2000000	Roof cast of G.Floor
13	Mohana	Malaspadar S/s	ITDA,Parlakhemundi	3500000	3500000	Completed
14	Mohana	Damadua R/S	ITDA,Parlakhemundi	3500000	2000000	Roof cast of G.Floor
15	Mohana	Khani S/s	ITDA,Parlakhemundi	3500000	3500000	Completed
16	Mohana	Jeerengo PSH	ITDA,Parlakhemundi	3500000	3500000	Completed
19	Mohana	Luhagudi UPS	ITDA,Parlakhemundi	3500000	3500000	Completed
22	Mohana	Lambapanka S/S	ITDA,Parlakhemundi	3500000	3500000	Completed
25	Mohana	Badasindhiva PSH	ITDA,Parlakhemundi	3500000	1300000	Roof Level
21	Mohana	Katama U P S	BDO,Mohana	3500000		Foundation level.
17	Mohana	Birikote PSH	ITDA,Parlakhemundi	3500000	600000	Plinth level
18	Mohana	Panigonda PSH	ITDA,Parlakhemundi	3500000	1000000	roof level

23	Mohana	Gambhariguda S/S	BDO,Mohana	3500000		Foundation level.
24	Mohana	Mandimera UPS	ITDA,Parlakhemundi	3500000	600000	Plinth level
20	Mohana	Educational Complex at Baghamari	ITDA,Parlakhemundi	3500000	3500000	Completed
26	R.Udayagiri	AbarsingiS/S	ITDA,Parlakhemundi	3500000	3500000	Completed
27	R.Udayagiri	LubursingiS/s	ITDA,Parlakhemundi	3500000	2800000	roof level
28	R.Udayagiri	K.Bhaliasahi UPS	ITDA,Parlakhemundi	3500000	1400000	roof level
29	R.Udayagiri	SialalatiPSH	ITDA,Parlakhemundi	3500000	3500000	Completed
30	R.Udayagiri	TabarasingiUPS	ITDA,Parlakhemundi	3500000	600000	Plinth level
31	R.Udayagiri	Sialilati Girls High School (Diversion)	ITDA,Parlakhemundi	3500000	1000000	Lintel Level
32	R.Udayagiri	SugadaPSH	ITDA,Parlakhemundi	3500000	100000	Lintel Level
33	Nuagada	AttarsingiS/s	ITDA,Parlakhemundi	3500000	2000000	Roof cast of G.Floor
34	Nuagada	Parimala S/s	ITDA,Parlakhemundi	3500000	2000000	Roof cast of G.Floor
35	Nuagada	SouriUPS	ITDA,Parlakhemundi	3500000	2500000	Roof cast of 1st.Floor
36	Nuagada	SambalapurPSH	ITDA,Parlakhemundi	3500000	1000000	Lintel Level
37	Nuagada	Kerdango PSH	ITDA,Parlakhemundi	3500000	2200000	Roof cast of G.Floor
38	Nuagada	BurusingiUPS	ITDA,Parlakhemundi	3500000	2000000	Roof cast of G.Floor
39	Gumma	RasikarajpurPSH	ITDA,Parlakhemundi	3500000	600000	Plinth level
40	Gumma	JangjangaS/S	BDO,Gumma	3500000		Foundation level.
41	Gumma	ParidaR/S	ITDA,Parlakhemundi	3500000	3500000	Completed
42	Gumma	Anukumba PSH	ITDA,Parlakhemundi	3500000	3500000	Completed
43	Gumma	Tumula PSH	BDO,Gumma	3500000	600000	Plinth level
44	Gumma	KujasingiPSH	ITDA,Parlakhemundi	3500000	600000	Plinth level
45	Gumma	Educational Complex at Luara, Bantilada	BDO,Gumma	3500000		Foundation level.
46	Gosani	Harischandrapur R/s	ITDA,Parlakhemundi	3500000	1200000	Plinth level
47	Kasinagar	Partada UPS	ITDA,Parlakhemundi	3500000	1000000	Lintel Level

48	Kasinagar	Hunali.Jagannathpur UPS	ITDA,Parlakhemundi	3500000		not started
49	Kasinagar	Siali UPS	ITDA,Parlakhemundi	3500000		Foundation level.
50	Kasinagar	Ullabhadra UPS	ITDA,Parlakhemundi	3500000	1200000	Plinth level
51	Kasinagar	KharadasingUPS	BDO,Kasinagar	3500000		Foundation level.
Total				17850000	90400000	

List of 100 seated ST Boys Hostel

Sl.No	Name of the Block	Name of the School where to be constructed	Executing Agency	Amount Released	Cumulative Expenditure	Remarks
1	Gosani	S.KCG College, Parlakhemundi	ITDA,Parlakhemundi	3500000	3500000	Completed
2	Gosani	S.K.C.G.High School, Gurandi	ITDA,Parlakhemundi	3500000	2000000	Lintel Level
3	Gosani	S.V.T. High School, Garabandha	ITDA,Parlakhemundi	3500000		Not started
4	Gosani	R.C.D High School, Bapujipentha	BDO,Gosani	3500000		Foundation level.
5	Gosani	T.M.High School, Upallada	ITDA,Parlakhemundi	3500000	3500000	Completed
6	Gosani	Govt U.G.High School, Bhuskudi	ITDA,Parlakhemundi	3500000		not started
7	Gosani	M.R Boys High School, Parlakhemundi under	ITDA,Parlakhemundi	3500000	3500000	Finishing work in progress
8	Gosani	Padmapur S/S	ITDA,Parlakhemundi	3500000	300000	Foundation level.
9	Gosani	Ghorani S/s	ITDA,Parlakhemundi	3500000	300000	Foundation level.
10	Gosani	Minaketan College, Gurandi, Gosani	ITDA,Parlakhemundi	3500000	600000	Plinth level
11	Gumma	Binodini Science College, Padmapur, Gumma	ITDA,Parlakhemundi	3500000	600000	Plinth level
12	Gumma	Govt High School, Serango	BDO,Gumma	3500000		Foundation level.
13	Gumma	Gumma Govt High School, Gumma	BDO,Gumma	3500000		Foundation level.
14	Gumma	Badakolakote Govt Boys High School (SSD)	BDO,Gumma	3500000		Foundation level.
15	Gumma	Parida R/S	ITDA,Parlakhemundi	3500000	300000	Finishing work in progress
16	Gumma	Anukundaguda S/S	ITDA,Parlakhemundi	3500000		Foundation level.
17	Gumma	Bhubani A/S	BDO,Gumma	3500000		Foundation level.
18	Gumma	Dangusingi S/S	BDO,Gumma	3500000		Foundation level.

19	Kasinagar	Sri Ram College, Kasinagar	ITDA,Parlakhemundi	3500000	2000000	roof level
20	Kasinagar	Baranasi High School, Kasinagar	ITDA,Parlakhemundi	3500000	2000000	Roof level
21	Kasinagar	B.M.High School,Kharada	ITDA,Parlakhemundi	3500000	3500000	Completed
22	Kasinagar	Bansadhara High School, Khandava	ITDA,Parlakhemundi	3500000	600000	Plinth level
23	Kasinagar	Bijayananda High School, Alada	ITDA,Parlakhemundi	3500000	600000	Plinth level
24	Kasinagar	Partada UPS, S &ME Dept	ITDA,Parlakhemundi	3500000	1000000	Plinth level
25	Kasinagar	H.Jagannhpur UPS,S & ME Dept	ITDA,Parlakhemundi	3500000	500000	Foundation level.
26	Kasinagar	Siali UPS. S & M.E Dept	BDO,Kasinagar	3500000		Foundation level.
27	Kasinagar	Ulabhadra UPS, S & M.E Dept	ITDA,Parlakhemundi	3500000	1500000	Roof cast of G.Floor
28	Kasinagar	Kharadasingi UPS, S & M.E Dept	BDO,Kasinagar	3500000		Foundation level.
29	Mohana	Indira Memorial College, Chandiput	ITDA,Parlakhemundi	3500000	1250000	Plinth level
30	Mohana	Hill Top College, Mohana	ITDA,Parlakhemundi	3500000		Foundation level.
31	Mohana	Govt U.G.High School, Sikulipadar	ITDA,Parlakhemundi	3500000	2100000	Roof level of Ground floor
32	Mohana	Adava High School,Adava	ITDA,Parlakhemundi	3500000	2500000	Completed
33	Mohana	L.B.S.High School, Chandiput	ITDA,Parlakhemundi	3500000	750000	Foundation level.
34	Mohana	Govt Boys High School, Chandragiri	ITDA,Parlakhemundi	3500000	3500000	Completed
35	Mohana	J.B.High School,Aliganda	ITDA,Parlakhemundi	3500000	2100000	Roof level of Ground floor
36	Mohana	Adavasi High School, Luhagudi	ITDA,Parlakhemundi	3500000	2800000	roof level
37	Mohana	Bibeka Nanda High School, Birikote	ITDA,Parlakhemundi	3500000	500000	Foundation level.
38	Mohana	G.M.U. Bidyapith, Paniganda	ITDA,Parlakhemundi	3500000	650000	Plinth level
39	Mohana	F.M.High School, Damadua	ITDA,Parlakhemundi	3500000	700000	Foundation level.
40	Mohana	Mohana Govt Boys High School(SSD)	ITDA,Parlakhemundi	3500000	600000	Plinth level
41	Mohana	Damadua R/s	ITDA,Parlakhemundi	3500000	600000	Foundation level.
42	Mohana	Nundruguda S/S	ITDA,Parlakhemundi	3500000		Not started
43	Mohana	Khani S/S	ITDA,Parlakhemundi	3500000	600000	Foundation level.

44	Nuagada	Dr. Ambedkar College, Khajuripada	ITDA,Parlakhemundi	3500000	600000	Foundation level.
45	Nuagada	Badapada High School, Badapada	ITDA,Parlakhemundi	3500000	2000000	Roof cast of G.Floor
46	Nuagada	Dogharia Govt Boys High School(SSD) (diverted from L.N.Bidyapitha)	ITDA,Parlakhemundi	3500000		not started due to non-availability of Land
47	Nuagada	Dogharia Govt Boys High School(SSD)	ITDA,Parlakhemundi	3500000	900000	Plinth level
48	Nuagada	Liobo S/s	BDO,Nuagada	3500000	2500000	Roof cast of G.Floor
49	R.Udayagiri	Randiva High School(Diverted)	ITDA,Parlakhemundi	3500000	1000000	Plinth level
50	R.Udayagiri	Mahendra Tanaya College,R.Udayagiri	ITDA,Parlakhemundi	3500000	600000	Plinth level
51	R.Udayagiri	Mahendragiri College, Ramagiri	ITDA,Parlakhemundi	3500000	600000	Plinth level
52	R.Udayagiri	Govt High School,R.Udayagiri	ITDA,Parlakhemundi	3500000	600000	Plinth level
53	R.Udayagiri	Govt High School, Chelligada	ITDA,Parlakhemundi	3500000	2000000	Roof cast of G.Floor
54	R.Udayagiri	K.G.High School, Mahendragada	ITDA,Parlakhemundi	3500000	3000000	Roof cast for 1st floor
55	R.Udayagiri	Ramagiri Govt Boys High School(SSD)	ITDA,Parlakhemundi	3500000	1000000	Lintel Level
56	R.Udayagiri	Chellagada Govt High School(SSD)	ITDA,Parlakhemundi	3500000	1000000	Lintel Level
57	R.Udayagiri	chelligada H/S (shifted from Abarsingi S/S)	ITDA,Parlakhemundi	3500000		Foundation level.
58	R.Udayagiri	Sabarapalli S/s	ITDA,Parlakhemundi	3500000	1000000	Plinth level
59	R.Udayagiri	T.R.Colony SS	ITDA,Parlakhemundi	3500000	600000	Plinth level
60	R.Udayagiri	Dabaraguda S/s	ITDA,Parlakhemundi	3500000	2000000	Roof level of Ground floor
61	Rayagada	Parsuram Gurukul Maha Bidlaya, Sevakpur	ITDA,Parlakhemundi	3500000	800000	Lintel Level
62	Rayagada	Govt High School,Gandahti	ITDA,Parlakhemundi	3500000	2000000	Roof cast for g. floor
63	Rayagada	Govt U.G.High School, Karadasingi	ITDA,Parlakhemundi	3500000	1600000	roof level
64	Rayagada	Govt U.G.High School, Dambalo	ITDA,Parlakhemundi	3500000		Foundation level.
65	Rayagada	Govt High School, Jeerango	ITDA,Parlakhemundi	3500000	500000	Plinth level
66	Rayagada	Govt High School, Rayagada(SSD)	ITDA,Parlakhemundi	3500000		not started
67	Rayagada	N.M.High School,Narayanpur	ITDA,Parlakhemundi	3500000	700000	Foundation level.
68	Rayagada	Rayagada Govt Boys High School	ITDA,Parlakhemundi	3500000	700000	Foundation level.

69	Rayagada	Mandalasahi S/s	BDO,Rayagada	3500000	500000	Plinth level
70	Mohana	Kesara UPS(diverted from Laxmipur H/S)	ITDA,Parlakhemundi	3500000		Tender to be invited
71	Rayagada	Koinpur Govt Boys High School (SSD)	ITDA,Parlakhemundi	3500000	2000000	Roof cast for Ground floor
72	Rayagada	Mukundapur S/s	BDO,Rayagada	3500000		Foundation level.
				Total	73150000	
				Grand Total	163550000	

Project list of IAP sanctioned for ITDA,Parlakhemundi			
Privision of Girls Hostel under IAP			
Sl. No	Name of the Projects	Estimated Cost (Rs in Lakhs)	Status
1	Construction of Women Hostel at Parlakhemundi	45.00	Work in progress
2	Construction of Girls Hostel at Chandiput	45.00	Work in progress
3	Construction of Girls Hostel (100 Seated at Khariguda UPSchool of Khariguda GP	45.00	Work in progress
4	Const of Girls Hostel (40 Seated) at Paleri	15.00	Work in progress
	Total:-	150.00	
Provision for Addl-Classroom under IAP			
Sl.No	Name of the School	Estimated Cost (Rs in Lakhs)	Status
1	Badakolakote High School ,Gumma	15.00	Work in progress
2	K.C.Pur High School ,Gumma	15.00	Work in progress
3	Rayagada High Schools,Rayagada	15.00	Work in progress
4	Koinpur High School,Rayagada	15.00	Work in progress
5	Dogharia High School,Nuagada	15.00	Work in progress
6	N.Jhalarsingi Girls High School,Nuagada	15.00	Work in progress
7	Ramagiri High School ,R.Udayagiri	15.00	Work in progress
8	Laxmipur High School,R.Udayagiri	15.00	Work in progress
9	Chellagada High School,R.Udayagiri	15.00	Work in progress
10	Sialilati Girls High School,R.Udayagiri	15.00	Work in progress
11	Mohana High School ,Mohana	15.00	Work in progress
12	Chandragiri Girls High School ,Mohana	15.00	Work in progress
13	Antaraba Girls High School,Mohana	15.00	Work in progress
	Total:-	195.00	
2. Provision for Latrine, Bath room Complex under IAP			

Sl.No	Name of the School	Estimated Cost (Rs in Lakhs)	Status
1	Harischandrapur Sevashram,Gosani	10.00	Work in progress
2	Badakolakote High School,Gumma	10.00	Work in progress
3	Laxmipur Girls High School,Rayagada	10.00	Work in progress
4	Koinpur (Boys) High School,Rayagada	10.00	Work in progress
5	Ramagiri Girls High School,R.Udayagiri	10.00	Work in progress
6	K.C.Pur Girls High School,Gumma	10.00	Work in progress
Total :-		60.00	Work in progress
4. Provision for Kitchen, Dining- cum Store room complex			
Sl.No	Name of the School	Estimated Cost (Rs in Lakhs)	Status
1	Laxmipur H.S,Rayagada	10.00	Work in progress
2	Jallango Sevashram,Rayagada	10.00	Work in progress
3	Badakolakote High School,Gumma	10.00	Work in progress
4	Sabarapalli Sevashram,R.Udayagiri	10.00	Work in progress
Total:-		40.00	Work in progress
Grand Total:-		445.00	

List of Sanctioned Projects under IAP(2nd Phase)

Sl. No	Name of the Project	Estimated cost(Rs)
1. Installation of Sub-Station		
1	Installation of Sub-Station at Rayagada High School in Rayagada Block	344262
2	Installation of Substation at Koinpur High School in Rayagada Block	216517
3	Installation of Substation at Badakalakota High School in Gumma Block	329017
4	Installation of Substation at K.C.Pur Girls High School in Gumma Block	329347
5	Installation of Sub-Station at Laxmipur Sevashram in Rayagada Block	300000
6	Installation of Sub-Station at Ramagiri High School in R.Udayagiri Block	276969
7	Installation of Sub-Station at Chellagada High School in Rayagada Block	281955
8	Installation of Sub-Station at Dogharia High School in Nuagada Block	259485
9	Installation of Sub-Station at Antaraba High School in Mohana Block	300000
10	Installation of Sub-Station at Parida Residential Sevashram in Gumma Block	300000
11	Installation of Sub-Station at Chandragiri Girls High School in Mohana Block	185283
12	Installation of Sub-Station at Bhubani Ashram School in Gumma Block	200000
Total:-		3322835
2.Hostel Building		

1	Tribal Hostel for ST Boys, SKCG, Parlakhemundi	2000000
2	Construction of 100 seated Tribal Hostel Building at Deuala under Gosani Block	4500000
	Total:-	6500000
<u>3. Drinking water Supply for Schools (to deposited with E.E,RWS & S)</u>		
1	Dogharia High School(for ST Girls)	227000
2	Ramagiri High School(for ST Girls)	269000
3	Tatrang Ashram School	45000
4	Mohana High School	65000
5	Ranikhama SS	32000
	Total:-	638000
<u>4. Development of Play ground</u>		
1	Chellagada High School	1000000
2	K.C.Pur Girls High School	1000000
	Total:-	2000000
<u>5.Purchase of Dining Table and Chair</u>		
1	EMRS Chandragiri (for Boys and Girls Hostel) @ Rs 25000X 40 per	1000000
	Total:-	1000000
	Grand total	13460835